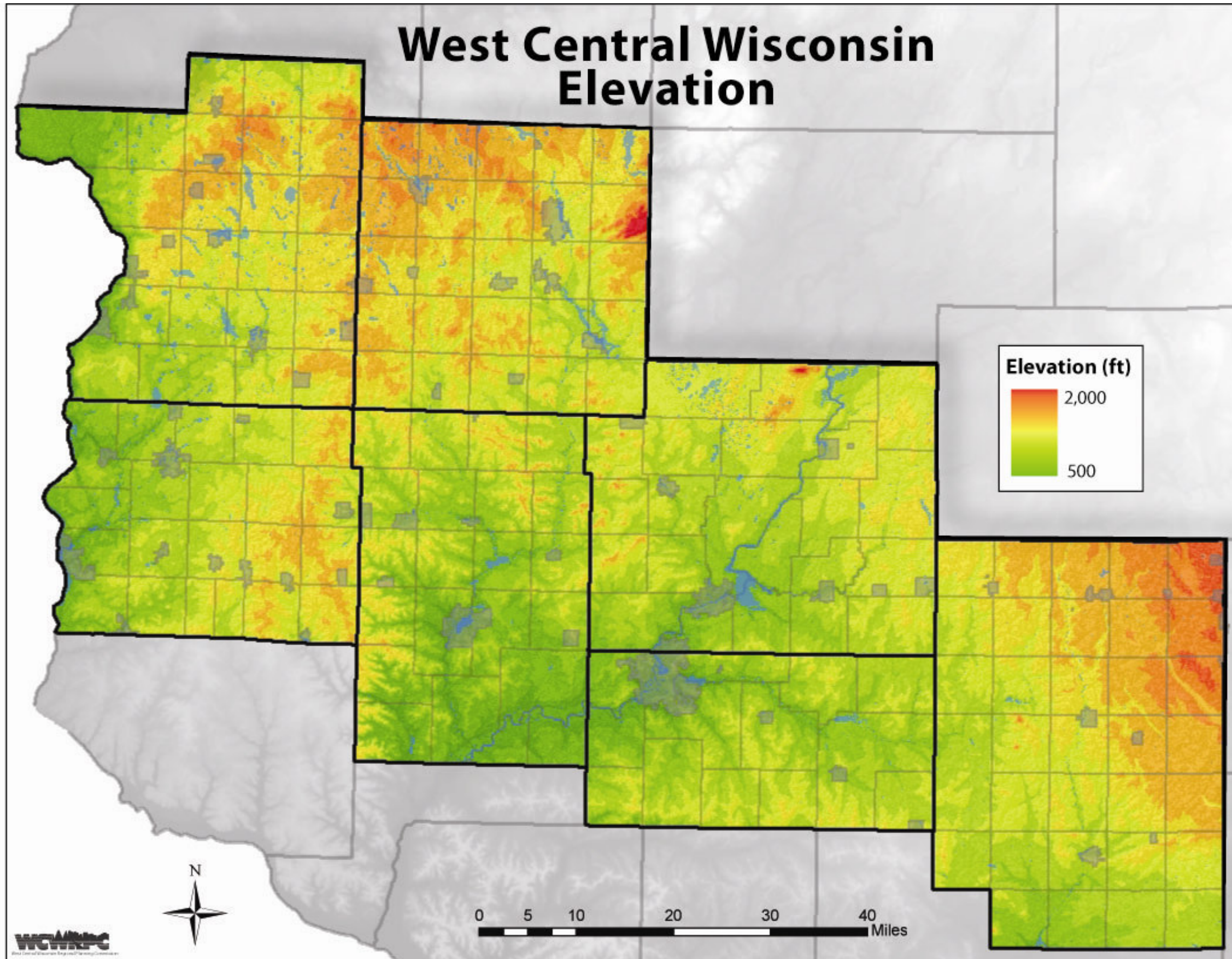


# West Central Wisconsin Elevation



This map shows the elevation in the seven-county region that stretches from Clark County to the east and the St. Croix River to the west. Cities and villages can be seen in the shaded areas. The municipal limits of Eau Claire can be seen in northwestern Eau Claire County. Lake Wissota is noticeable east of Chippewa Falls. Commonly called the Chippewa Valley, the Chippewa River and its tributaries are dominant features on the map, as seen by the darker and medium shades of green that extend out from the Chippewa, Eau Claire, and Red Cedar rivers in the central part of the map.

There is a distinct difference between the two locations of higher elevations in the region. The higher elevations in Clark County are a gradual increase in elevation. This can be experienced while traveling along State Highway 29, where one does not notice any dramatic elevation changes along the highway or in the distance. In contrast, parts of Barron and Polk County have high elevations that are more severe. Elevation differences in the northwestern portion of the region are more noticeable as a result from glacial periods. The darkest red in Barron County is part of the Blue Hills, which stretch into the region.

These differences are one of the major reasons why land cover and land uses are different in these two parts of the region. With limited severe elevation changes, the eastern portion of the region is able to have larger areas of continuous cropland. In contrast, large acreages of cropland are not as ideal in the northern portions of Barron and Polk Counties.

The northern portion of the map shows the large number of lakes in Barron, Polk and northern Chippewa counties. The Chetek Chain of Lakes is one of the larger water bodies, and can be seen in southeastern Barron County, east and north of Chetek.

Hudson can be seen along the St. Croix River in southwestern St. Croix County. The communities between Hudson and Menomonie show the path of Interstate Highway 94. The path of State Highway 29 can be seen by the communities spanning from eastern Chippewa County to northern Clark County.