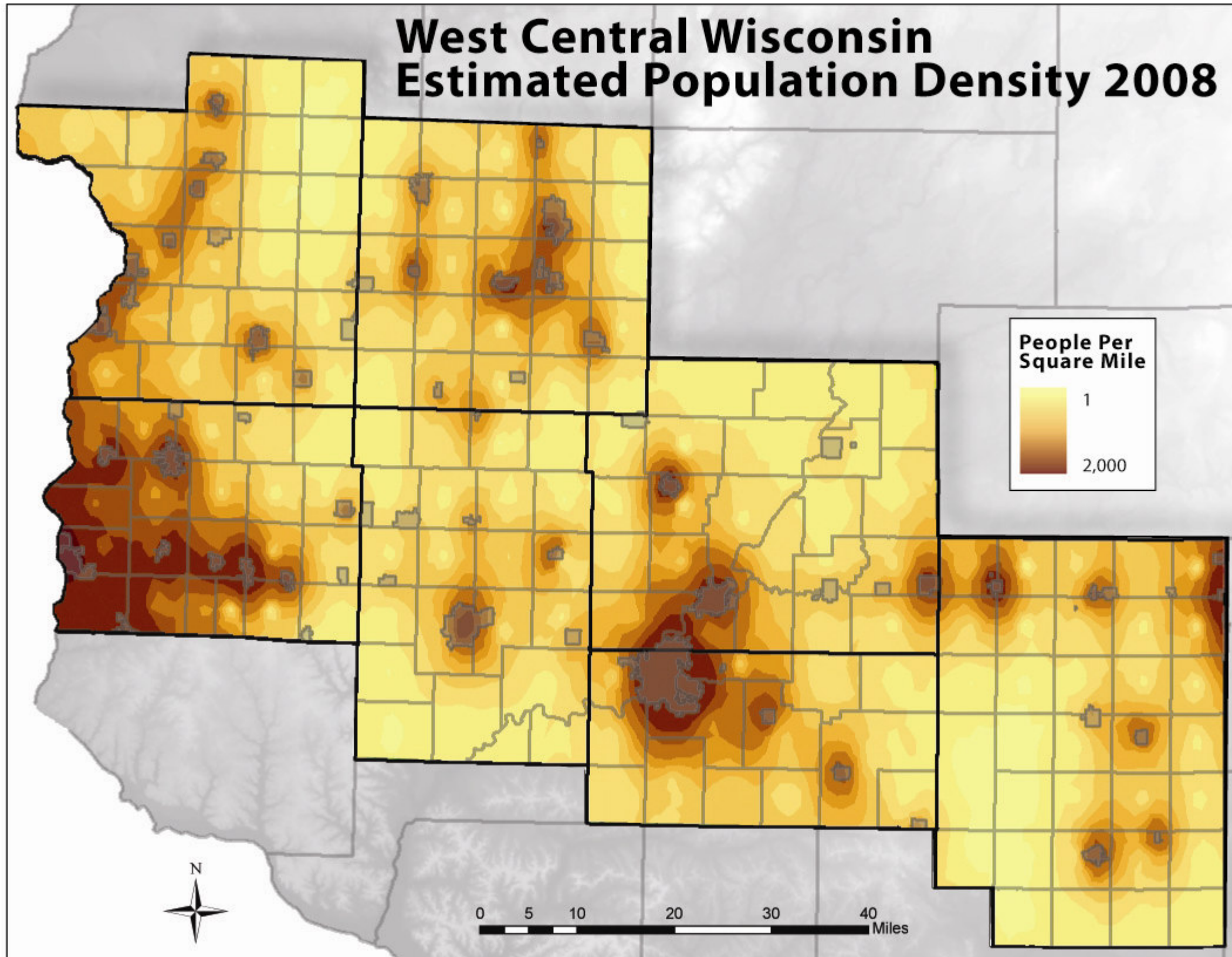


West Central Wisconsin Estimated Population Density 2008



This map shows the population density for the seven-county region. The data came from the State of Wisconsin Department of Administration's 2008 population estimates. The map was created by a technique called kriging, which calculates the value of random fields from data that are available at nearby locations. Due to the size of the region (each small square on the map represents a six mile by six mile area), it is difficult to calculate the densities for small areas. This technique allows the creation of a map that shows the general population density pattern for the region. As would be expected, different sized concentric circles are located throughout the map where incorporated areas are located.

Some of the more noticeable observations on the map are the size of the Eau Claire/Chippewa Falls metropolitan area, the density extending east from the Twin Cities to eastern St. Croix County, the rural nature and large percentage of low density in Clark County, and how the majority of the denser communities throughout the region are located on State or Federal transportation corridors.