

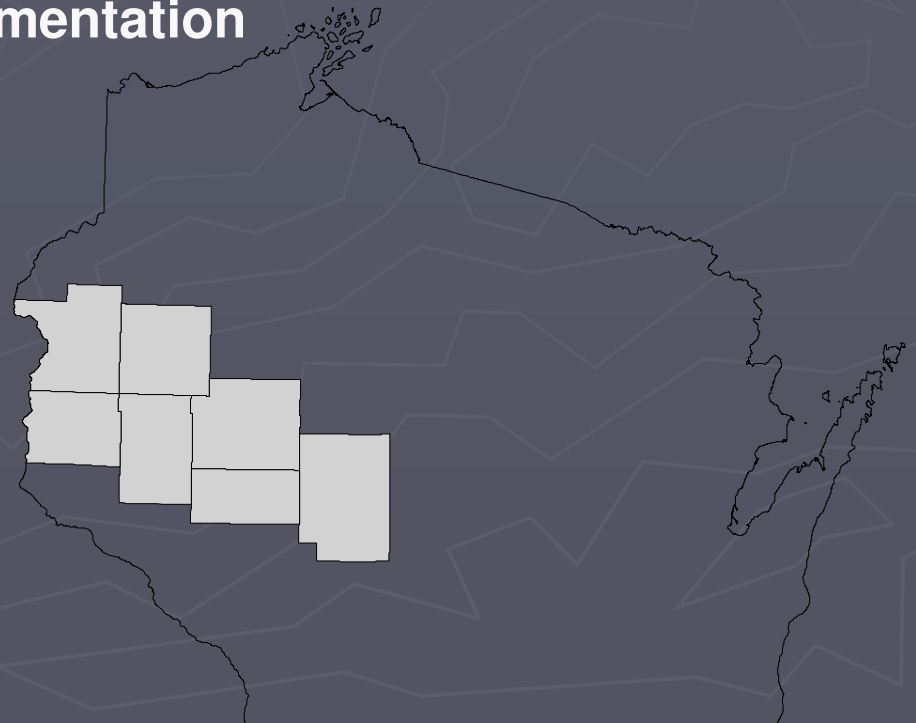
West Central Wisconsin Regional Comprehensive Plan

Regional Intergovernmental Coordination Group
& Technical Advisory Group

Joint Meeting #6

Plan Implementation

February 25, 2010
Menomonie, WI



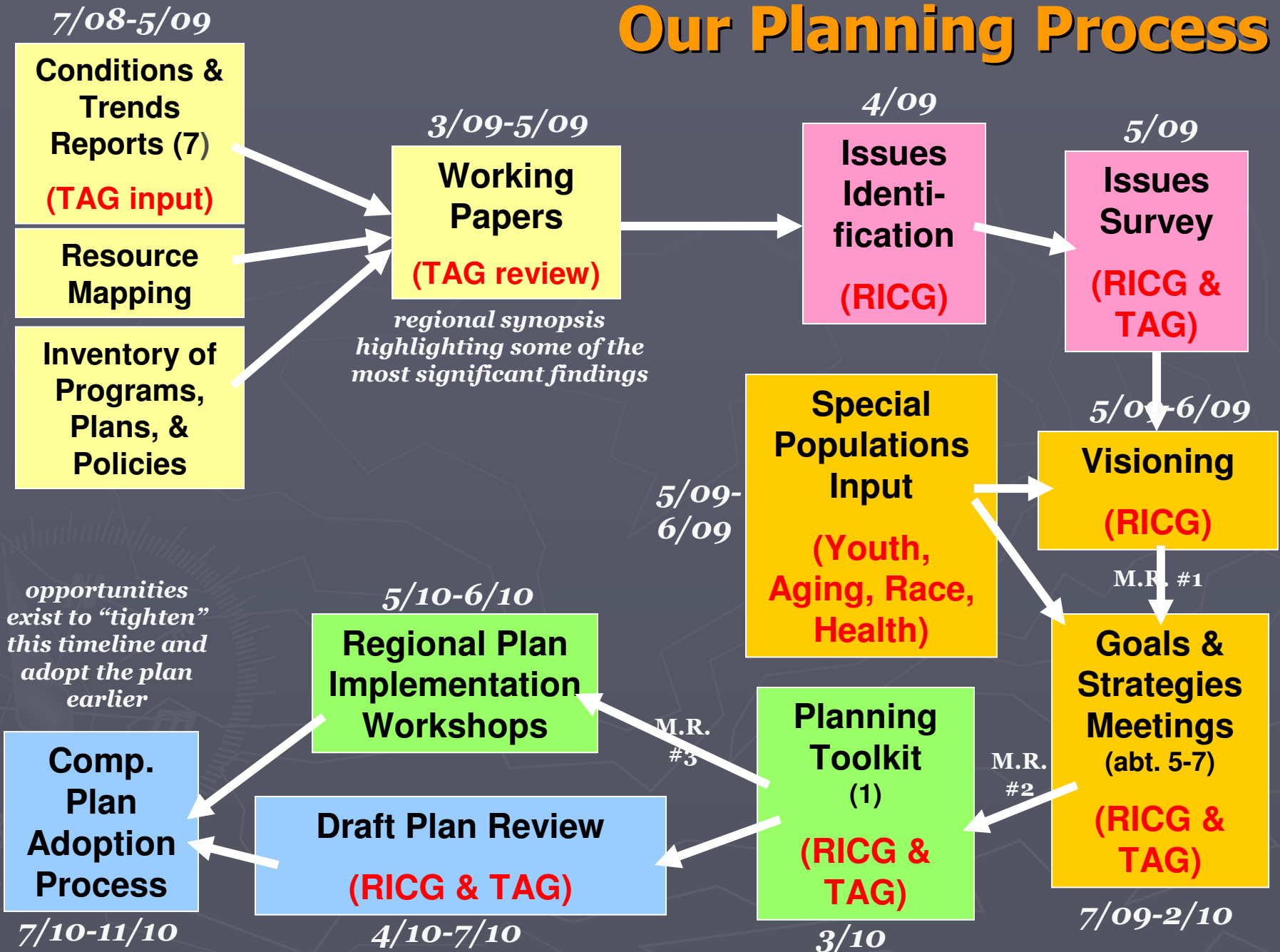
Welcome & Introductions

- ▶ Regional Intergovernmental Coordination Group (RICG) – town, city/village, and county government officials
- ▶ Technical Advisory Group (TAG) – technical experts on various plan elements

Today's Agenda

- ▶ Progress on the Regional Comprehensive Planning Effort
- ▶ Discuss Implementation Element

Our Planning Process



RICG/TAG Meeting Schedule

Feb 2010: Implementation Element
(1 meeting)

Mar 2010: Toolkit and Plan Map
(1 meeting)

Apr 2010: Draft Plan Review
(comments via mail, E-mail, etc)

Implementation Element

Per §66.1001, this element must...

...identify actions and their sequence to implement the plan strategies...

...describe how plan's elements are integrated and consistent...

...identify an evaluation and plan update mechanism...

Implementation Element

Unique approach, since our strategies reflect that WCWRPC is largely a coordinating and advisory agency with no regulatory authority.

Addressed in 3 primary ways:

1) Strategy Guidance (sequence & key players)

2) Implementing Our Vision (integration & consistency, actions)

3) Our "Toolkit" (actions, integration & consistency)

Strategy Guidance

adding recommended key participants and suggested timeframe

Highway

1. Coordinate the development of a regional approach to uniform crash data collection. Such data would allow the State of Wisconsin to access High Risk Rural Roads Program funding from the USDOT, and allow improvements to be targeted to highest crash areas. **[WCWRPC, Counties, WisDOT, Law Enforcement agencies - Short-range]**

Transit/Rideshare

2. Form an entity that will be the arena for region-wide coordination of rural transit services discussion. *[County Human Services, Aging Units, ARDCs, Service Providers, Center for Independent Living, WCWRPC, WisDOT - Short-range]*

3. Inventory and coordinate park and ride lot and carpooling program development in appropriate locations, and garner the revenue to support and maintain them. *[WCWRPC, County Highway Commissioners, WisDOT - Mid-range]*

4. Coordinate a transit service system that facilitates the interaction of services effectively on a region-wide basis. *[Entity resulting from Strategy #2, above - Short-range]*

Our “Toolkit”

the focus of the March 25th meeting

Design Oriented with a focus on West Central Wisconsin

1. Visually reflect those strategies which have a design component
2. Use regional examples, case studies, and data if possible
3. Build on the Wisc. Comprehensive Planning Implementation Toolkit
4. Also highlight interrelationships, fiscal impacts, and resources

Potential Topics

- development density alternatives and density transfer
- conservation subdivision design
- downtown revitalization/redevelopment techniques
- traditional neighborhood design
- wayfinding, aesthetics, and sense-of-place alternatives
- local costs of services examples

Implementing Our Vision

focus of the February 25th meeting

General Approach

- Show the relationship between plan implementation and each component of the vision statement, including related key issues, strategies, and programs/plans.
- Provide a detailed example approach for a related key strategy recommendation.
- Key issues, strategies, and example approach were largely selected based on issues prioritization (5/09). Examples also tended to be regional and integrates multiple elements.

Vision Components

- sustainable communities
- working cooperatively
- strong social, physical, and economic linkages
- vibrant communities
- identifiable communities / rural character
- diverse resource preserved

Meeting Wrap-Up

- ▶ **Next Meeting Date: March 25, 2010**
 - toolkit and plan map
- ▶ **Rough Draft Plan distributed in April !!!**

Thank You!