

WORKING TOGETHER TO PROTECT WATER QUALITY IN THE MENOMONIE AREA

What is a Sewer Service Area Plan (SSA Plan)?

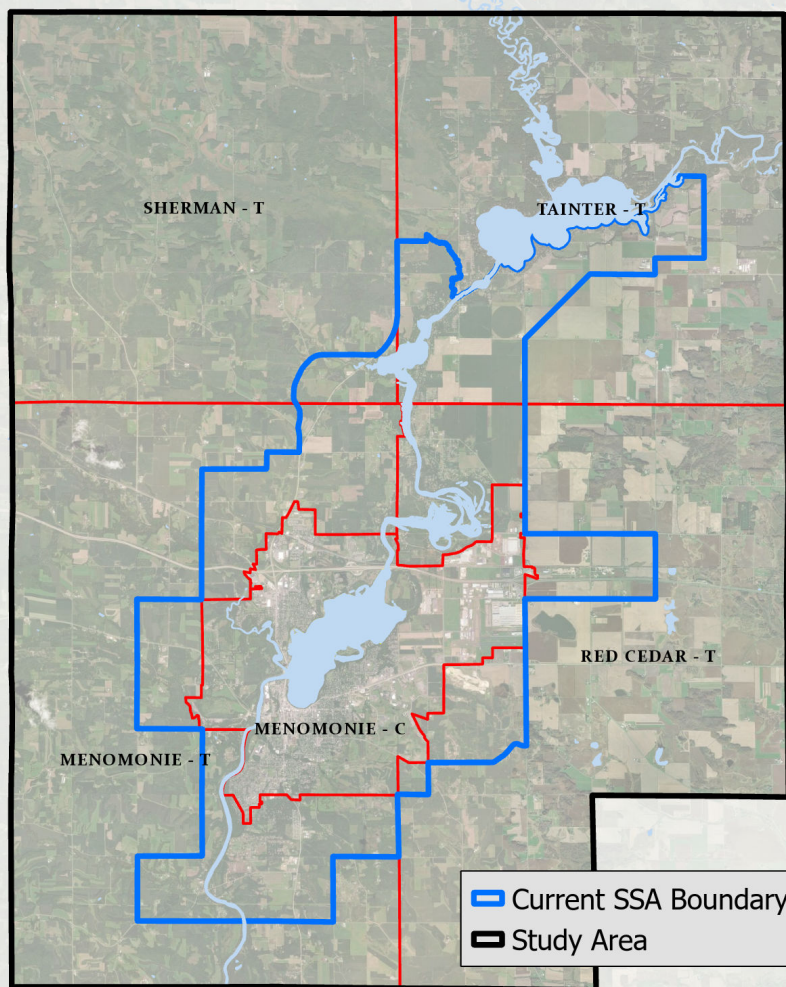
The SSA Plan is a cooperative plan driven by Section 208 of the Clean Water Act and NR 110 & 121. The SSA Plan:

- » Anticipates a community's future needs for wastewater treatment.
- » Discourages the development of environmentally sensitive areas where development would adversely impact water quality.
- » Supports water quality protection plans, programs and policies within the plan area.
- » Is used by local, State, and Federal agencies when considering municipal wastewater facility plans, permitting for municipal sewer extensions (i.e., 208 reviews), and certain related grant applications.
- » Is not intended to restrict growth, obligate municipalities to provide sewer service, or affect community annexation policies.

WHY YOUR PARTICIPATION IS IMPORTANT

- ✓ Water quality is important to all of us and the factors that influence water quality cross governmental boundaries.
- ✓ This SSA update may influence your community's ability to grow through the next generation of residents.
- ✓ The SSA Plan can impact wastewater treatment facility plans, private mains, holding tanks, smaller shared systems, and land spreading.
- ✓ The SSA Plan is a regional plan with policies that apply to the entire SSA regardless of whether connected to municipal sewer or not.
- ✓ You can provide insight into your community's comprehensive plan, related policies, and any proposed development projects.
- ✓ The Menomonie area is required to have an SSA Plan, which should be regularly updated.
- ✓ Help strengthen consistency between the SSA Plan and your community's plans and policies.
- ✓ Municipal sanitary sewer in the area cannot be extended outside the SSA boundary.
- ✓ The SSA Plan defines the process for considering future SSA-related decision-making.
- ✓ The data and policies in the SSA Plan will influence other regional and local plans.

SSA Study Area



WHAT IS INCLUDED IN THE SSA PLAN UPDATE?

The SSA Plan content is largely identified in NR 121.05, though the plan may reference (and not duplicate) other plans and policies that address the required elements of an areawide water quality management plan. Major components of the SSA Plan update include:

- » A water quality assessment for the planning area, including consideration of climate trends and equity/environmental justice.
- » Analysis of wastewater treatment systems, capacities, and needs.
- » 20-year population and land use growth forecasts.
- » A review of environmentally sensitive areas (ESA) definitions and maps.
- » An updated sewer service area boundary where sanitary sewer may be provided in a cost-effective and environmentally sound manner over the next 20 years.
- » A review and update of goals, objectives, policies, and administrative procedures to guide sewered development and protect water quality within the SSA.

SSA Plan Update Process

The Plan update process is underway and it is expected that a final draft plan will be submitted to WDNR by the end of 2025. Major steps during this process include:

- » 6 planned meetings with the plan update steering committee and a public hearing on the updated draft plan.
- » Review and consideration of related community plans and policies including comprehensive plans, wastewater facility plans, water quality-related regulations, and any intergovernmental agreements.
- » WDNR review and approval.

Key SSA Plan Update Roles

Wisconsin DNR Under NR 121, WDNR has authority over the preparation and administration of the urban area's SSA Plan.

WCWRPC WDNR has designated WCWRPC as the local planning agency to facilitate the SSA Plan's update.

Steering Committee Communities in the study area were requested to designate representatives to the Plan Update Steering Committee to assist with the update of the SSA Plan. The Committee serves as the local policy advisory committee to WDNR under NR 121.

Questions or Comments?

Contact:

Chris Straight

WCWRPC Senior Planner

Email: cstraight@wcwrpc.org

Phone: 715-836-2918