

CHIPPEWA-EAU CLAIRE

MPO QUARTERLY

March 2025

Edition #17

**Chippewa Valley
Bike Map**

*Third edition
coming out soon*

**Long Range
Transportation
Plan Update**

*Public Participation
Complete*

**Friendship
Benches**

*A small tool to
battle social
isolation*



Long Range Transportation Plan Update

The MPO staff continues to work on the Long Range Transportation Plan (LRTP) update. During the initial public participation portion of the update, the LRTP [webpage](#) had a link to the online survey and listed the date and location for the three open houses. Staff will post draft documents on the webpage as the process continues.

At this time, staff is reviewing and cataloging public survey results and the comments from the survey and open houses. In addition, staff has started the mapping and data acquisition for the plan. Staff will present survey results, overall findings from the public participation, and draft goals at the next Technical Advisory Council (TAC) and Policy Council meetings.

The schedule for April through June includes developing strategies, acquiring and reviewing data, creating maps, and working on the text of the document. Draft strategies will be presented to the TAC and Policy Council in August for review. The final draft of the document will be presented to the TAC and Policy Council at their September and October meetings.

Project Updates

Long Range Transportation Plan Update - Ongoing.

Capital Improvement Plan (CIP) Story Maps - Ongoing.

Eau Claire County Vehicle Registration Fund project Story Map - Ongoing.

Transportation Improvement Program (TIP) 2024-2028 amendment - Approved in October. TIP Recertification - Approved in October.

City of Chippewa Falls Wayfinding Plan - Ongoing.

Passenger Rail - Phase 1 should be completed in the next few weeks. The hope is to start Phase 2 shortly after.

Chippewa Valley Bike Routes - Communities continue to install signage. MPO staff continues to facilitate and update installation map.

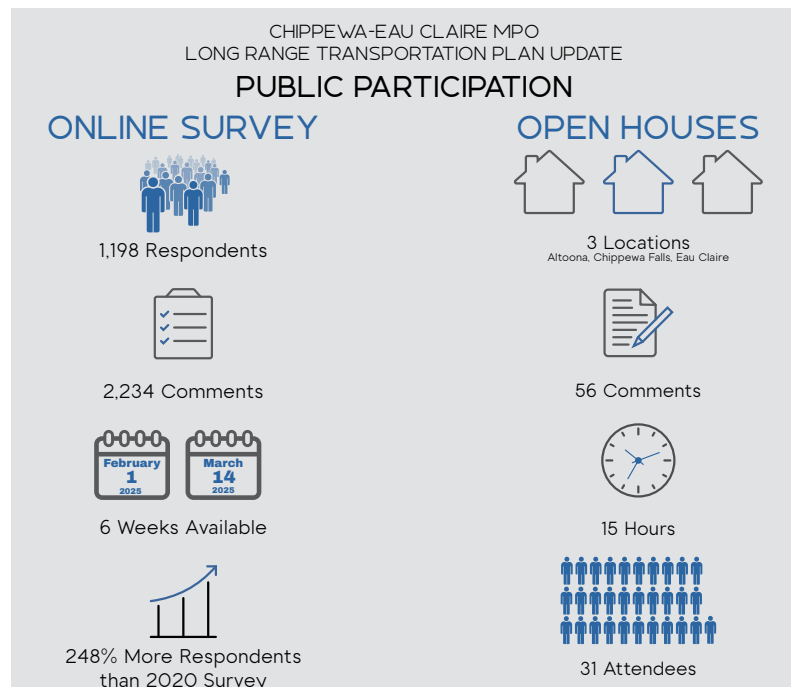
Intersection and Traffic Control Analysis - Over 40 studies completed. Please contact us if you would like us to do any intersection or speed studies for your community.

Chippewa Valley Bike Map - Ongoing.

LRTP Public Participation and Thank You

Below is an infographic from the public participation process. There was a 248% increase in the number of people that responded to the online survey from 2020 to 2025. From the nearly 1,200 respondents, the survey gathered over 2,200 comments from open ended questions. Many of these comments included multiple suggestions. The MPO was unable to host open houses in 2020, and it was important for us in 2025 to host them in multiple locations in the urban area. To try and allow the highest number of people to attend, each open house was scheduled for five hours. The meetings in Chippewa Falls and Eau Claire were from 2pm-7pm and in Altoona was from 9am-2pm.

Also, staff would like to give a huge thank you to all the communities that helped us promote the online survey and open houses. Many communities posted a link to the survey and promoted the open houses. That made a very significant impact on participation.

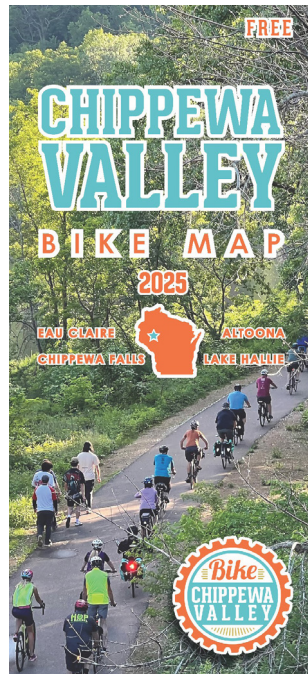


The Chippewa-Eau Claire MPA includes:

The cities of Altoona, Chippewa Falls, and Eau Claire, the Village of Lake Hallie, and all or parts of the towns of Anson, Brunswick, Eagle Point, Hallie, Lafayette, Pleasant Valley, Seymour, Tilden, Union, Washington, and Wheaton.
www.wcwrpc.org 715.836.2918

Chippewa Valley Bike Map

MPO staff is working on the second update to the Chippewa Valley Bike Map. The map was first created in 2015, and then it was updated in 2020. This third edition will be completed this summer. The map is a product of Bike Chippewa Valley, which is a non-profit. MPO staff works on the map of the foldout map. The map highlights bike routes in the urban area and also shows additional features like bike shops, schools, over/underpasses, tourist information, parks, and more. In addition to the map, the map has sponsors listed on the back side. MPO staff has done the mapping all three years.



The image to the right gives you a look at what the 2025 cover will look like.

Placemaking: Friendship Benches

There is growing discussion about social isolation in society and how transportation systems can play a part in increasing social interactions and combat mental illness, especially with seniors. In 2024, the word *Vänskapsbänk* officially became a new Swedish word. The word translates directly to Friendship Bench. In Sweden, the word means a bench placed to encourage conversation between people, as part of combating mental illness in society. As we look for new ways to incorporate placemaking along trails, scenic locations, and/or anywhere in our communities, Friendship Benches might be a good tool to incorporate.



Contact Information

WCWRPC Staff Working on MPO Projects



Eric Anderson
Senior Planner/MPO Director
eanderson@wcwrpc.org
Ext. 18



Edwin Rothrock
Associate Planner
erothrock@wcwrpc.org
Ext. 25



Landon Profaizer
Associate Planner
lprofaizer@wcwrpc.org
Ext. 22

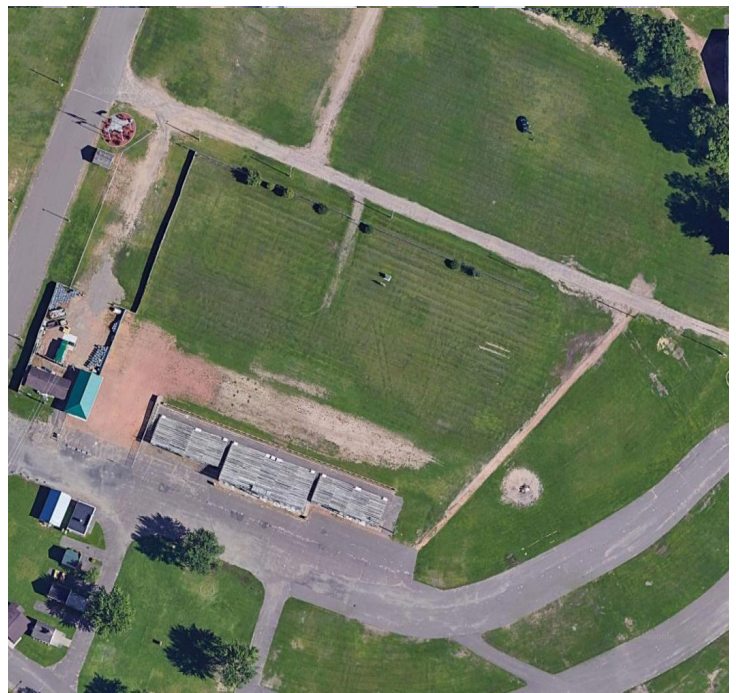


Emily Huerta
Assistant Planner
ehuerta@wcwrpc.org
Ext. 23

MPA Geography - 101

How good is your geography in the MPA? We have a new photo in each newsletter.

Good luck!!



MPA Geography 101 Answer: Click on this [link](#) to find the location.