

LONG RANGE TRANSPORTATION PLAN Chippewa-Eau Claire Metropolitan Planning Area - 2055

VISION



In the year 2055, the Chippewa-Eau Claire Urban Area has one of the safest and best maintained transportation systems in the Country.

The transportation system provides multi-modal options for all people, highly efficient movement of goods and services, and an excellent quality of life.

GOALS



- 1: There is consistently a very low rate of total crashes and fatal crashes.
- 2: Transportation infrastructure is dependable, and quality is kept up to the highest standards.
- 3: All persons have multiple viable transportation options in the urban area.
- 4: Goods and services are easily and economically moved through, in, and out of the urban area.
- 5: The transportation system adds to the quality of life and does not negatively affect daily life.

PLANNING AREA

Square Miles



175.3

POPULATION

Total



2022
110,303

2055
124,340



Total Change
14,037

Percent Change
13%

ONLINE PUBLIC SURVEY



1,198

Responses

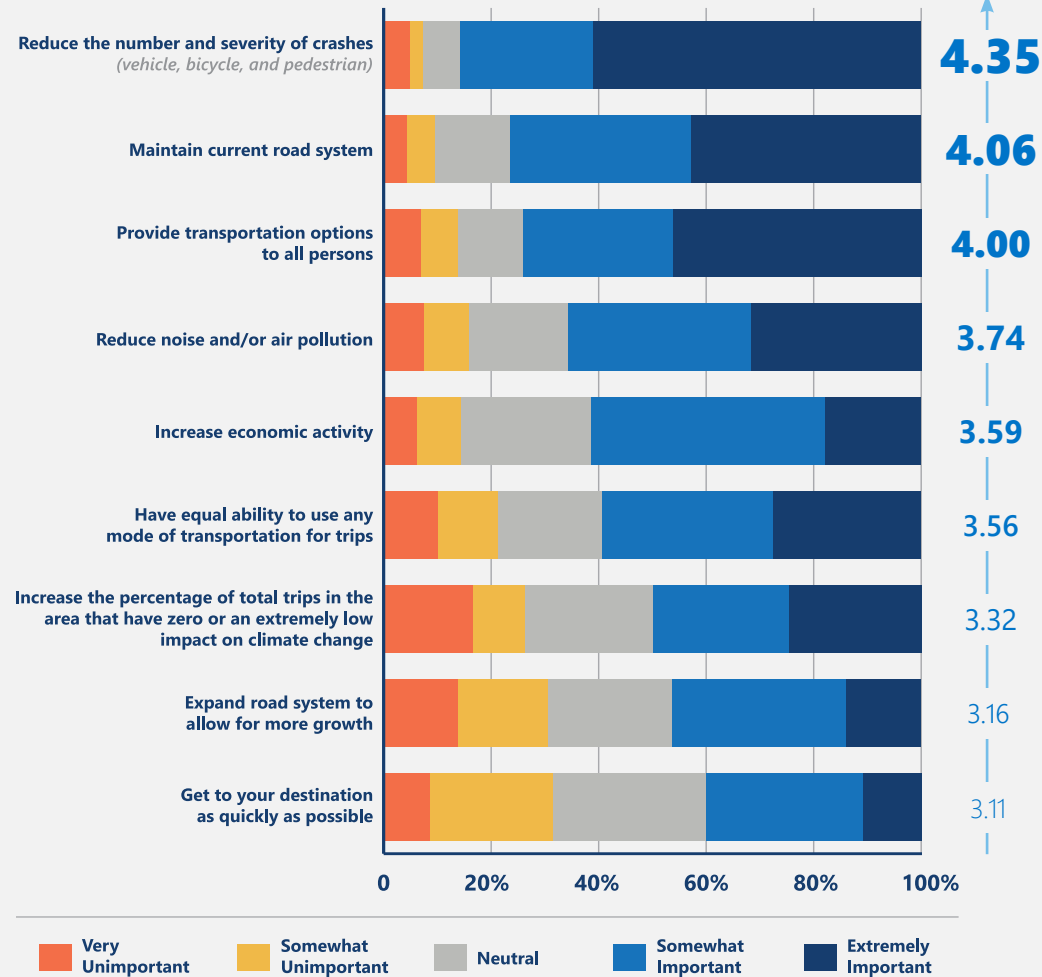
2,234

Comments

SURVEY QUESTION

In regards to the transportation system in the area, how important is it to:

WEIGHTED AVERAGE



CRASH DATA

2022 - 2024



7,533

Total Crashes

6.9

Per Day

CRASH TYPE & SEVERITY

Transportation Mode	Fatal Crashes	Severe Crashes	Total Crashes
Pedestrian	3	10	53
Bicycle	1	4	34
Vehicle Only	15	106	6,048
Total	19	120	6,135

Source: WisDOT

CLAIREMONT AVENUE

Of 21 intersections with the highest crashes, 11 were along Clairemont Avenue. In total, Clairemont Avenue (from STH 312 to USH 53) had 846 reported crashes over the three-year period.

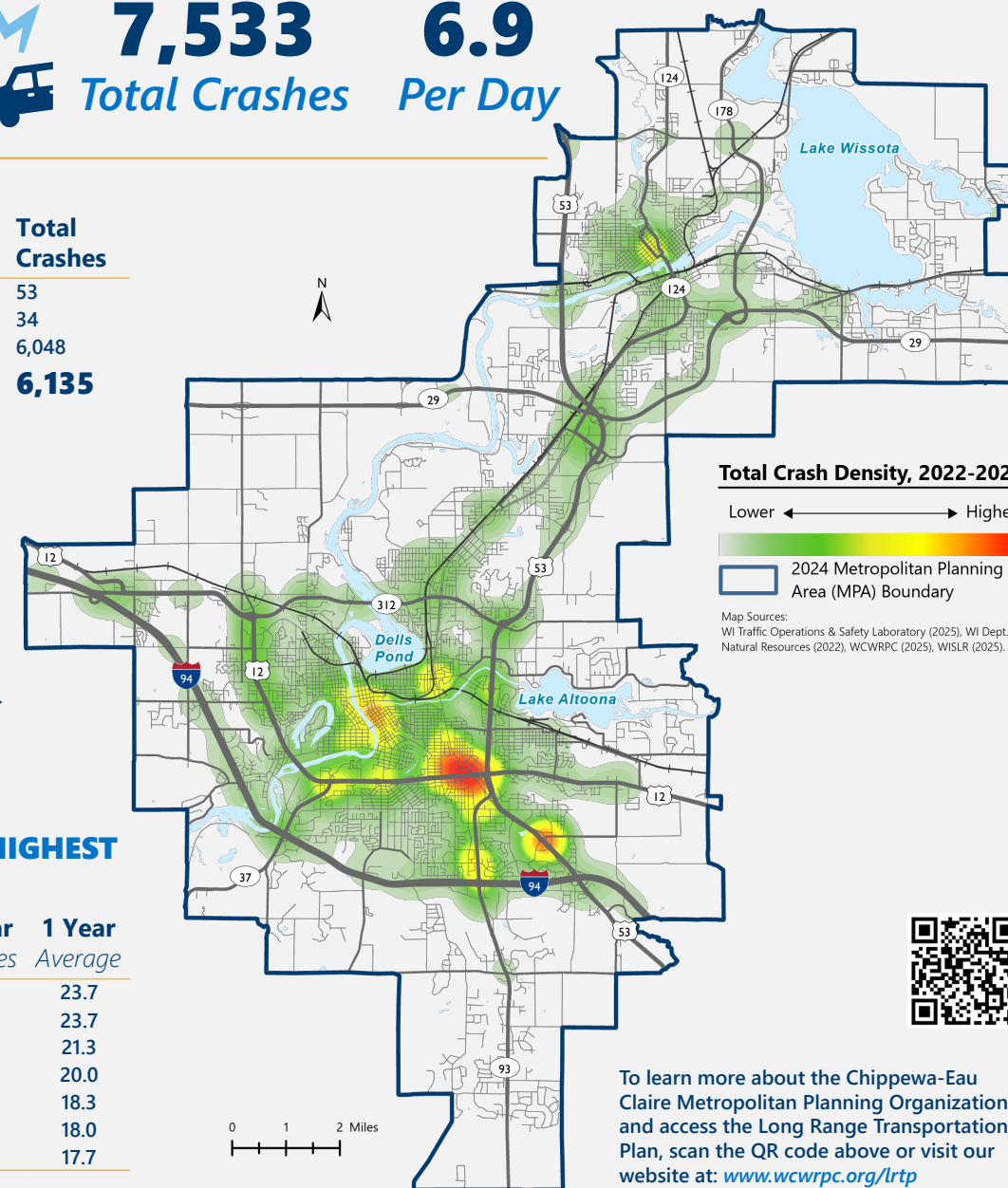
This averages to 23.5/month or 5.4/week and is 11% of the total reported crashes in the MPA.

Modeling for 2055 shows that a reduction in the speed limit from 45mph to 40mph would not increase congestion.

INTERSECTIONS WITH THE HIGHEST NUMBER OF CRASHES

Intersection	3 Year Crashes	1 Year Average
Clairemont Ave & London Rd	71	23.7
Hastings Way & Birch St	71	23.7
STH 93 & Golf Rd	64	21.3
Clairemont Ave & USH 53	60	20.0
Clairemont Ave & Fairfax St	55	18.3
Gateway Dr & Prill Rd	54	18.0
STH 93 & Hamilton Ave/Mall Dr	53	17.7

Source: WisDOT



Transportation System Improvement Recommendations

- Each community/county be committed to reduce crashes at intersections with their highest total number of crashes.
- Comprehensive safety initiatives are incorporated along high crash corridors: Hastings Way (Clairemont Ave. to STH 312), Clairemont Ave. (STH 312 to USH 53), and STH 93 (USH 53 to I94).
- Provide a regional transit option that connects communities in the MPA.
- Increase the amount of separated bicycle and pedestrian facilities, so they are not shared with vehicles.
- Increase safety for all modes of transportation in downtown Chippewa Falls, downtown Eau Claire, and around UWEC campus and UWEC student housing areas.
- Continue to work to increase passenger rail, passenger air, and transit travel options.
- Total crashes and fatal crashes are reduced by five percent each year for the next five years.

The planning area includes the **Cities of Eau Claire, Chippewa Falls, and Altoona; the Village of Lake Hallie; as well as portions of the Towns of Brunswick, Pleasant Valley, Seymour, Union, and Washington in Eau Claire County; and Anson, Eagle Point, Hallie, Lafayette, Tilden, and Wheaton in Chippewa County.**

CONTACT INFO:

Eric Anderson, MPO Director / Senior Planner
West Central Wisconsin Regional Planning Commission
Chippewa-Eau Claire MPO
E-mail: eanderson@wcvrpc.org
Telephone: 715.836.2918, Ext. 18

